



Earth Rd., Ibayo Tipas, Taguig City

ALLIED SERVICES GROUP

BY DMCI



ENGR. DAVID M. CONSUNJI

DMCI Founder
Grandfather of the Philippine Construction Industry

About Us

Established on
December 24, 1954

One of the leading
engineering-based integrated construction
companies in the Philippines

First Quadruple A
contractor in the
country

The “Builder of
Landmarks”

Pioneered several construction
methodologies

Completed over 1,000 projects of
varying scale and complexity

WWW.DMCINET.COM



MISSION

“Build structures of technical integrity that enhance both society and the nation’s progress while working towards greater professionalism and reasonable returns”



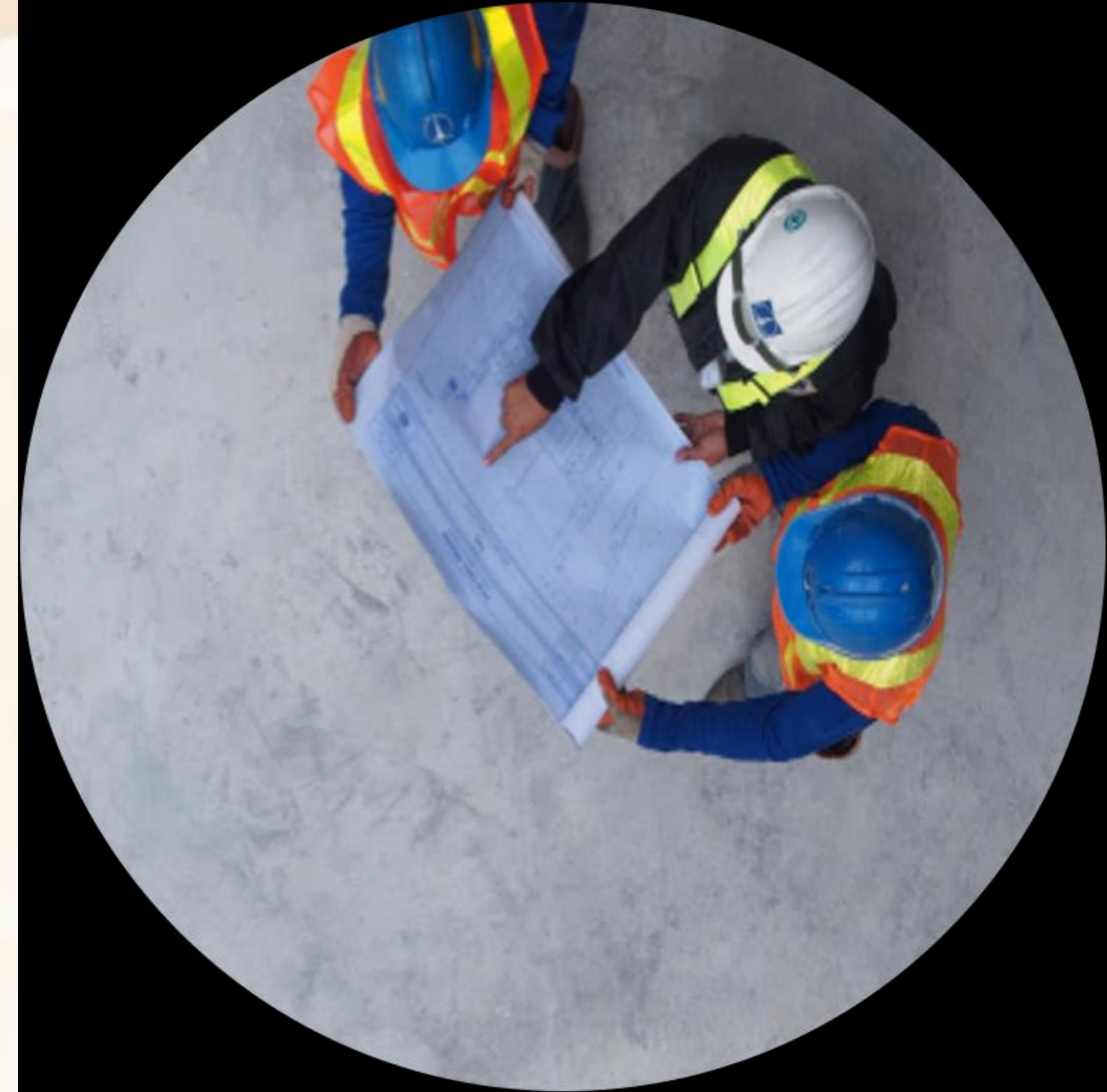
VISION

“To be a world-class company in the targeted segments of the industry”

OUR CREED

WE BELIEVE THAT...

- Construction is a noble profession whose activities are vital to economic development and national progress;
- Fair competition is essential to the growth and stability of the construction industry;
- A contractor’s primary responsibility to his client is to give his best in faithful compliance with their agreement;
- Labor and capital should cooperate with one another so that labor may live with dignity and capital may find its just rewards;
- The ill-gotten violates business ethics and the ill-conceived wreaks havoc on the public good;
- The ultimate objectives are to serve not only man but humankind, and to build not only an enterprise but an institution that will serve society.



GROUP STRUCTURE



DMCI BY THE NUMBERS



70
Years of existence



1,500+
Light and Heavy Equipment



150+ km
Roads and Bridges



18.8B
Ave. Revenue (5 yrs.)



1,000+
Total Projects
(Small to large scale)



100+ km
Railway Projects
(Completed/Ongoing)



41.9B
2023 Order Book



300+
Building Projects



100+ km
Water Pipelaying



9,000+
Manpower as of 2023



1,000+ MW
Power Plant
(EPC, Civil Works and Rehab – Completed/Ongoing)



500+ MLD
Water Infrastructure
(WTP and STP – Completed/Ongoing)

OUR BUSINESS

BUSINESS UNITS



Building

High-rise, commercial and residential buildings and institutional facilities



Utilities and Plants

Water, sewer facilities, and pipelines



Infrastructure

Roads, Bridges, Elevated and at-grade roads, viaducts, railways, airports and civil works



Energy

Power plants, industrial plants, substations, and transmission lines

ALLIED SERVICES



Steel Fabrication

Structural steel fabrication plant, with a monthly capacity of 1500 metric tons



Equipment Management

Large fleet of heavy construction equipment



Concrete Products

Ready Mix Concrete supply including precast products



Formworks and Scaffoldings

Various types of forms and scaffoldings

EQUIPMENT MANAGEMENT

ALLIED
SERVICES
GROUP
BY DMCI

Self-owned Fleet of Major Equipment

- Lifting
- Hauling
- Excavating
- Concreting
- Track works
- Pile Driving
- Earth Moving
- Air Equipment
- Power Generator
- Shop Equipment
- Compaction
- Service Vehicle

* more than a thousand of
light and heavy equipment
units



Our Services



HAULING



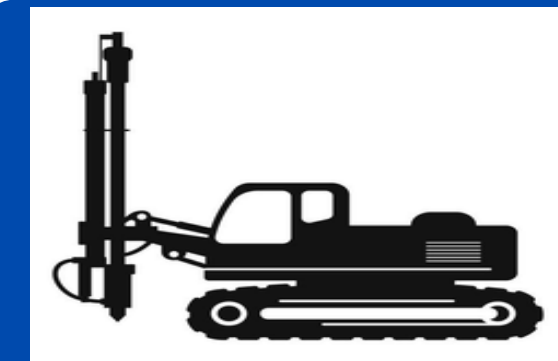
EXCAVATING



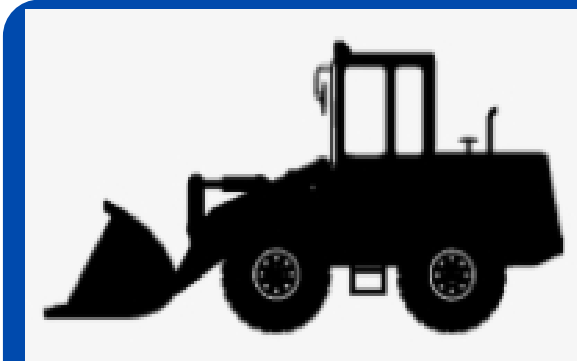
**SPECIALIZED
LIFTING**



LIFTING



PILING



EARTHMOVING

Our Hauling Equipment



Our Excavating Equipment



99 UNITS

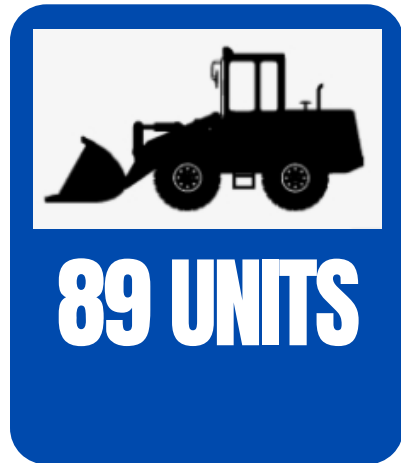


70
Years of
Existence



1,000+
Total
Projects

Our Earthmoving Equipment



Our Lifting Equipment



138 UNITS



70
Years of
Existence



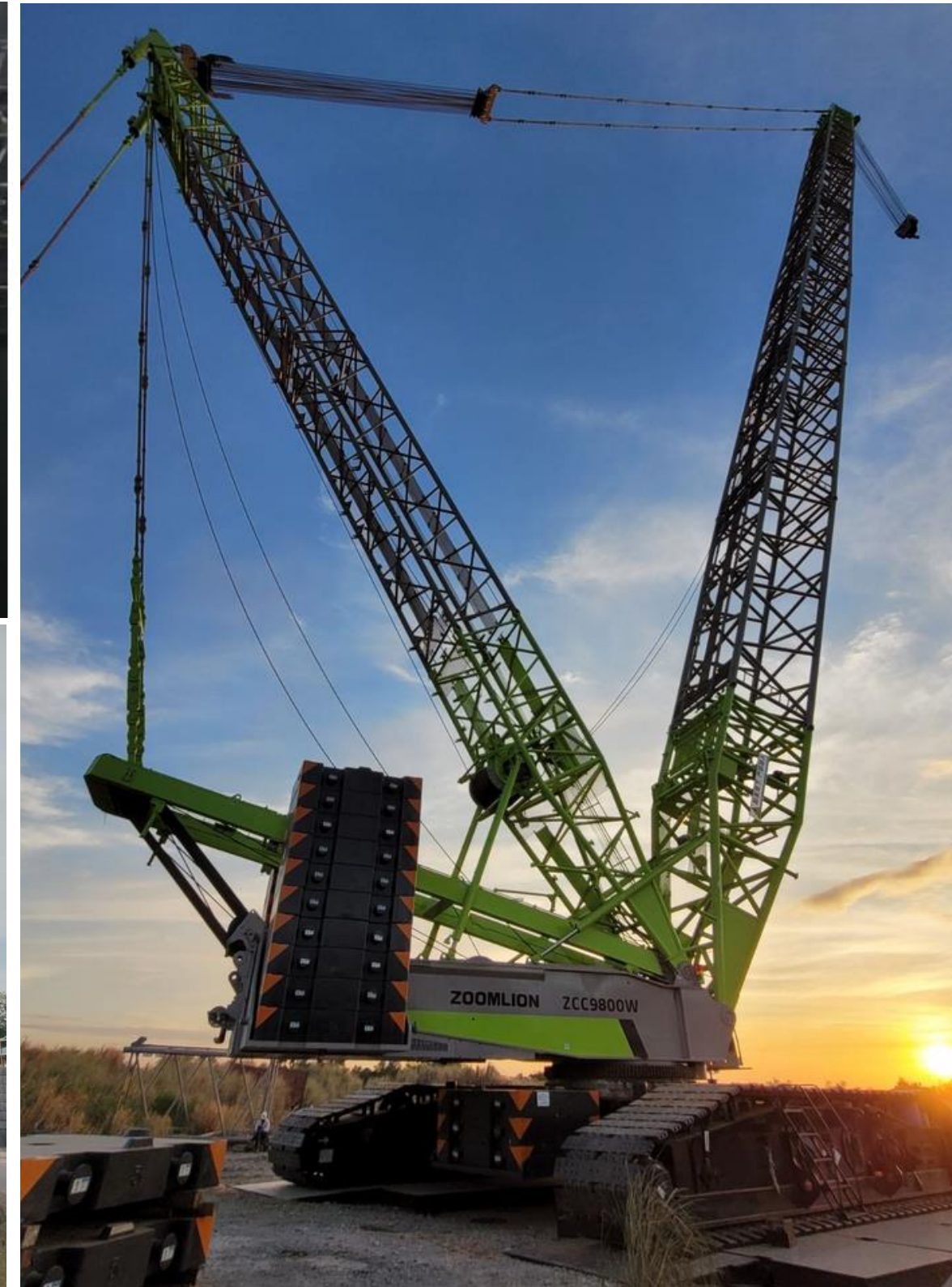
1,000+
Total
Projects



Our Personnel Lifting Equipment



Our Specialized Lifting Equipment



20 UNITS



70
Years of
Existence



1,000+
Total
Projects



Our Piling Equipment



67 UNITS



70
Years of
Existence



1,000+
Total
Projects

CONCRETE PRODUCTS

Capabilities:

- High Strength Concrete:
 - 83 Mpa (12,000 Psi)
 - High Strength Concrete with 10% PFA
- High Early Strength Concrete
- High Volume Fly Ash (HVFA)
- Flex Concrete
- Plaster Mortar
- Retarded Plaster Mortar
- Controlled Density Fill (CDF)
- Cement Treated Base (CTB) Course
- Lightweight Concrete
- Grout
- Self-Compacting Concrete (SCC)
- Precast Wall Panel
- Acotec Wall Panel
- Precast / Pre-stressed Concrete Piles
- Post-tensioned Concrete Girders



STRATEGIC LOCATION



**Tugatog, Meycauayan,
Bulacan**

**Capacity : 90m³/hr
105m³/hr**



Taguig, Metro Manila

Capacity : 180m³/hr



Batangas - Future



Iloilo - Future

PRODUCTS



**PRECAST CONCRETE
SLEEPERS**



**PRECAST POST-
TENSIONED GIRDERS**



**PRE-STRESSED CONCRETE
PILES**



PRECAST WALL PANELS

EQUIPMENT



Batching Plants



Battery Mold



Acotec Plants



Transit Mixers



Stationary Pumps



Truck-Mounted Pumps

FORMWORKS & SCAFFOLDINGS

Formworks & Scaffoldings:

- Tableform
- Crab 60
- Periform System
- Otinord System
- Aluma System
- A-frame Scaffold System



CRAB 60 SHORING SCAFFOLD SYSTEM

A MULTI-DIRECTIONAL & MULTI-LEVEL HEAVY DUTY SHORING EQUIPMENT TO SUPPORT ALL TYPES OF HEAVY STRUCTURES, AND IS MANUFACTURED TO COMPLY WITH BRITISH STANDARD BS 5975 AND BS EN 12812

ADVANTAGES:

- QUICK INSTALLATION AND DISMANTLING
- INTERCHANGEABLE AND FLEXIBLE
- MISTAKE FREE
- DURABLE



CONVENTIONAL SCAFFOLD SYSTEM

COMMONLY USED FOR GENERAL CONSTRUCTION AND UNSYMMETRICAL FLOOR FRAMING USING A-FRAMES AND OTHER FORMWORKS ACCESSORIES

WHEN TO USE:

- NON-TYPICAL FLOOR FRAMING
- SMALL AND ISOLATED AREA WITH VARYING ELEVATION
- LIMITED OR NO ACCESS TO LIFTING EQUIPMENT
- FLOOR TO FLOOR HEIGHT IS LESS THAN 6 METERS

ADVANTAGES:

- TRANSFER OF FORMWORKS MATERIALS CAN BE LESS DEPENDENT ON EQUIPMENT
- VERY FLEXIBLE AND CAN BE USED FOR VARIOUS APPLICATION

DISADVANTAGES:

- DISMANTLING CONSUMES MORE MANHOURS
- FORM SHEETING (phenolic plywood) WASTAGE IS HIGH



HEAVY SHORING

SHORING IS THE PROCESS OF TEMPORARILY SUPPORTING A BUILDING, VESSEL, STRUCTURE, OR TRENCH WITH SHORES (props) WHEN IN DANGER OF COLLAPSE OR DURING REPAIRS OR ALTERATIONS. SHORING COMES FROM SHORE, A TIMBER OR METAL PROP. SHORING MAY BE VERTICAL, ANGLED, OR HORIZONTAL.

SHORING SYSTEMS EXISTING AT DMCI:

- PROPS (ACROW POST) - LIGHT DUTY
- PECCO SUPPORT SYSTEM - HEAVY DUTY
- PIPE SUPPORT SYSTEM (FABRICATED) - HEAVY DUTY
- MEGASHORE (JACK ONLY) - HEAVY DUTY



CLIMBING FORM SYSTEM

CLIMBING FORMWORK IS A SPECIAL TYPE OF FORMWORK FOR LARGE VERTICAL CONCRETE STRUCTURES. CLIMBING FORMWORKS WILL REPRESENT AN EFFECTIVE SOLUTION FOR STRUCTURES THAT REQUIRE SEAMLESS WALLS OR HAVE A VERY REPETITIVE FORM.

COMPONENTS OF CLIMBING FORMWORKS:

- PLATFORMS FOR CONCRETE WORKERS
- WALL FORMWORK MATERIAL AND PIECES
- LIFTING BEAM
- ADDITIONAL WORKING PLATFORM
- SUSPENSION PLATFORMS

WHERE TO USE CLIMBING FORMWORKS:

IT IS HIGHLY RECOMMENDED IN SUPER-TALL STRUCTURES LIKE:

- SKYSCRAPERS
- BRIDGE PYLONS
- AIRPORT CONTROL TOWERS
- HIGH RISE BUILDINGS
- ELEVATOR SHAFTS
- SILOS



SCAFFOLD SYSTEM FOR ACCESS & PLATFORMS

DESIGNED TO PROVIDE TEMPORARY ACCESS TO HARD-TO-REACH PLACES ON LARGE CONSTRUCTION SITES.

ADVANTAGES:

- OFFERS FREEDOM OF MOVEMENT AND ADEQUATE WORKSPACE, WHILE ALSO PROVIDING A SAFER SYSTEM FOR CONSTRUCTION AND PUBLIC AREAS IN HARD-TO-REACH PLACES. THIS TYPE OF SCAFFOLDING CAN BE SETUP AND DISMANTLED QUICKLY AND CAN EASILY BE ADAPTED TO MEET ALL WORKSITE REQUIREMENTS.

TYPES OF ACCESS SCAFFOLD SYSTEM:

- A-FRAMES ACCESS SCAFFOLD
- CRAB 60 ACCESS SCAFFOLD
- PIPE SCAFFOLD ACCESS



A-FRAME ACCESS SCAFFOLD



CRAB 60 ACCESS SCAFFOLD



PIPE ACCESS SCAFFOLD

SCAFFOLD SYSTEM FOR ACCESS & PLATFORMS

NSCR TDJV LG AREA



NSCR VIADUCT



Our Contact



+63 956 466 9609 / +63 966 263 3669



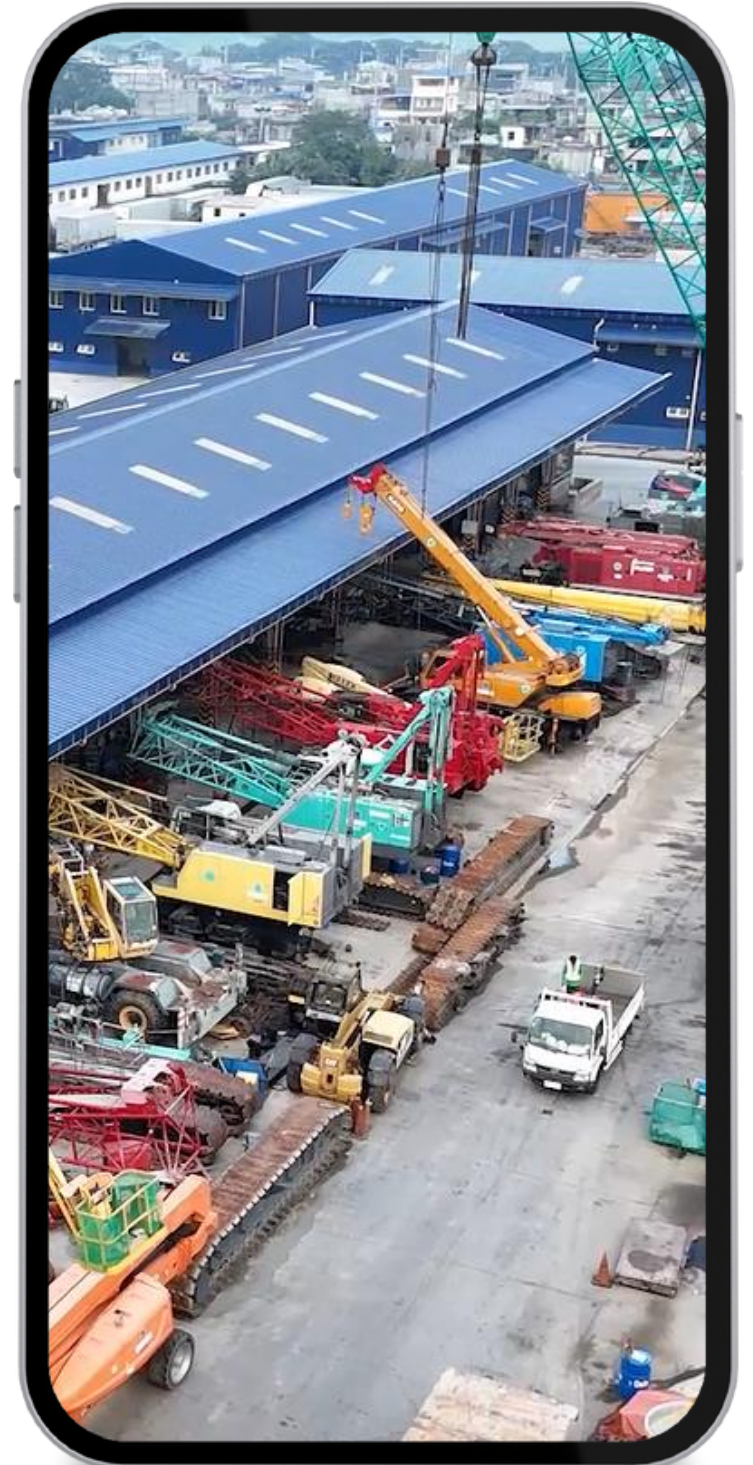
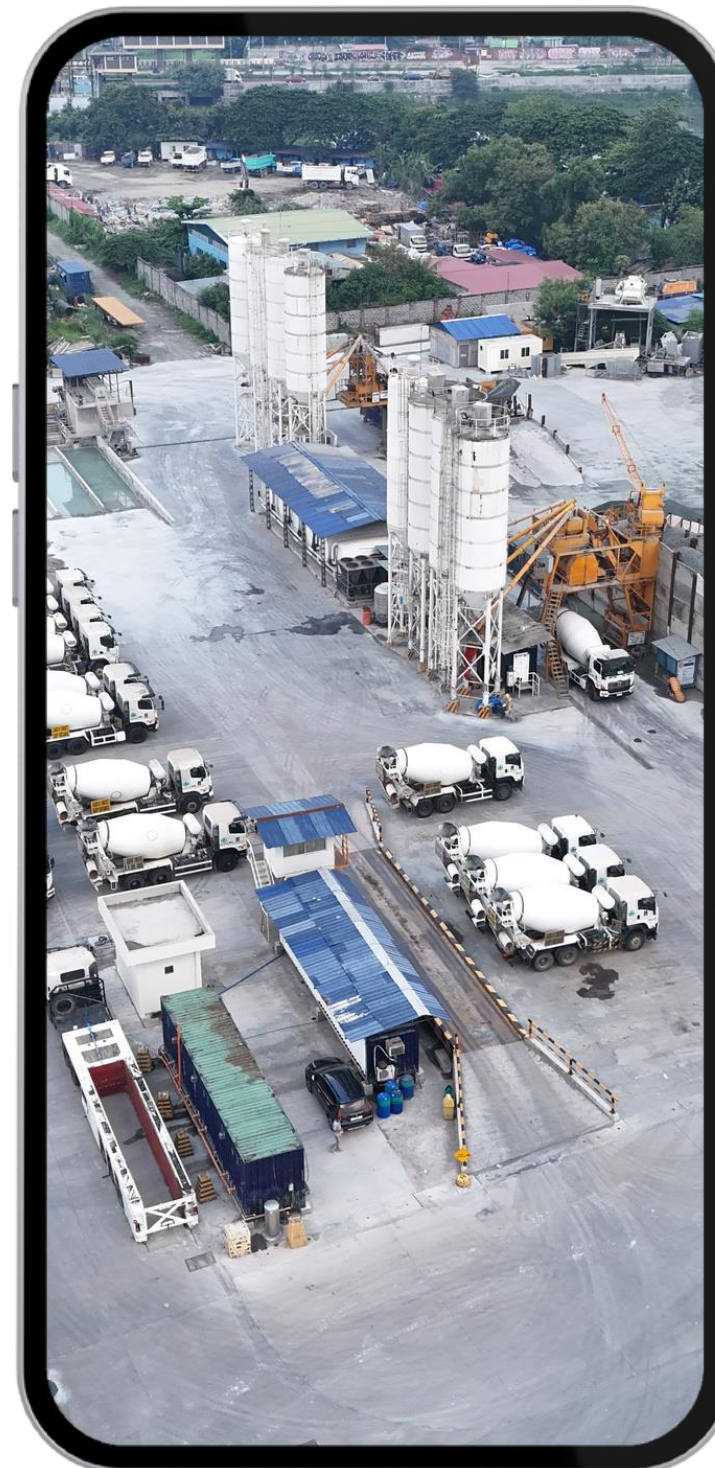
WWW.DMCINET.COM



ASGINQUIRIES@DMCINET.COM



EARTH RD., IBAYO TIPAS, TAGUIG CITY





Thank You

“You cannot serve clients until you get them, and you cannot get them without generating the initial lead to convert them from an unknown person to someone interested in your product or service to an actual paying client,” said Goldberg.